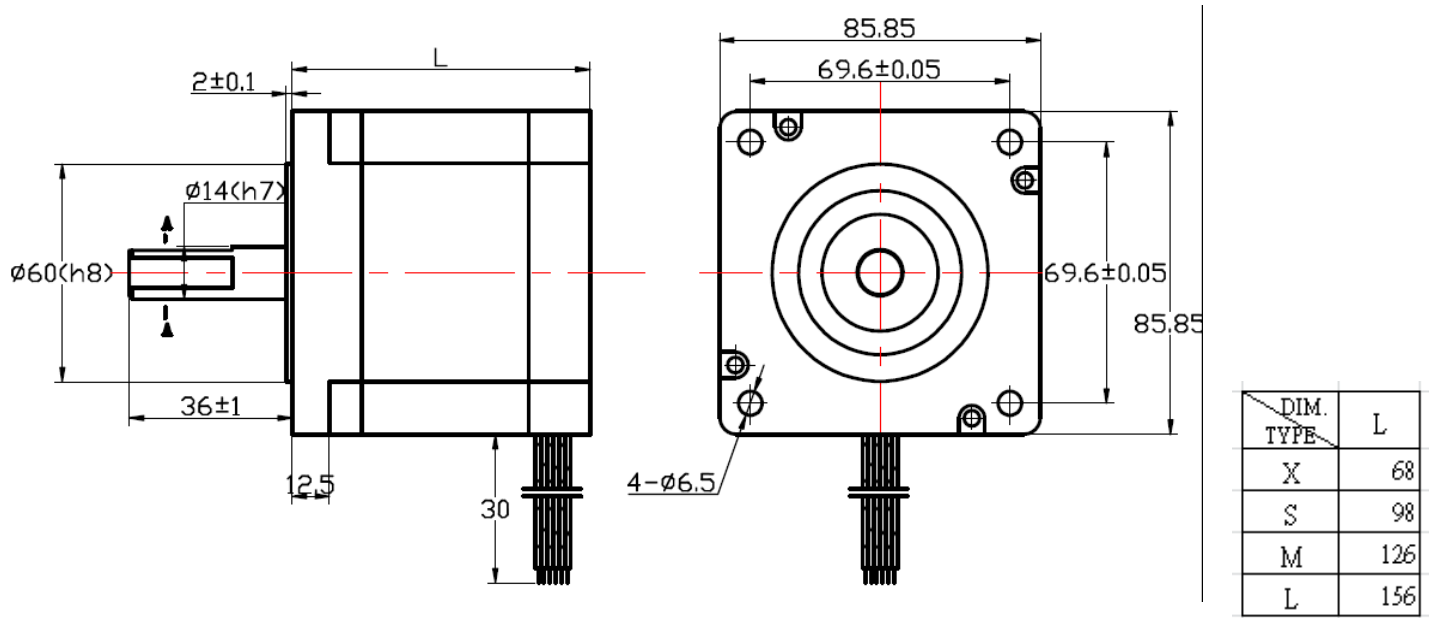




# Stepping Motor 5T8 Series

## DIMENSION (UNIT:mm)



## Specifications

Model	Holding Torque Kg-cm	Rated Current A/Phase	Voltage Volt.	Winding Resistance $\Omega$ /Phase	Inductance mH/Phase	Roter Inertia g-cm <sup>2</sup>	Weight g	Length mm	Leads
5T811-514	21.0	1.4	1.96	1.40	5.40	1400	2050	68	5
5T811-528	21.0	2.8	1.32	0.47	1.80	1400	2050	68	5
5T821-514	41.0	1.4	3.08	2.20	10.80	2700	3300	98	5
5T821-528	41.0	2.8	1.46	0.52	2.55	2700	3300	98	5
5T831-514	63.0	1.4	4.48	3.20	20.00	4000	3930	126	5

<b>5T831-528</b>	<b>63.0</b>	<b>2.8</b>	<b>6.80</b>	<b>1.70</b>	<b>10.63</b>	<b>4000</b>	<b>3930</b>	<b>126</b>	<b>5</b>
<b>5T841-530</b>	<b>78.0</b>	<b>3.0</b>	<b>3.00</b>	<b>1.00</b>	<b>5.20</b>	<b>5100</b>	<b>5500</b>	<b>156</b>	<b>5</b>